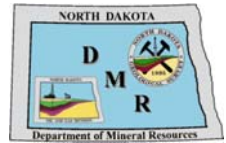




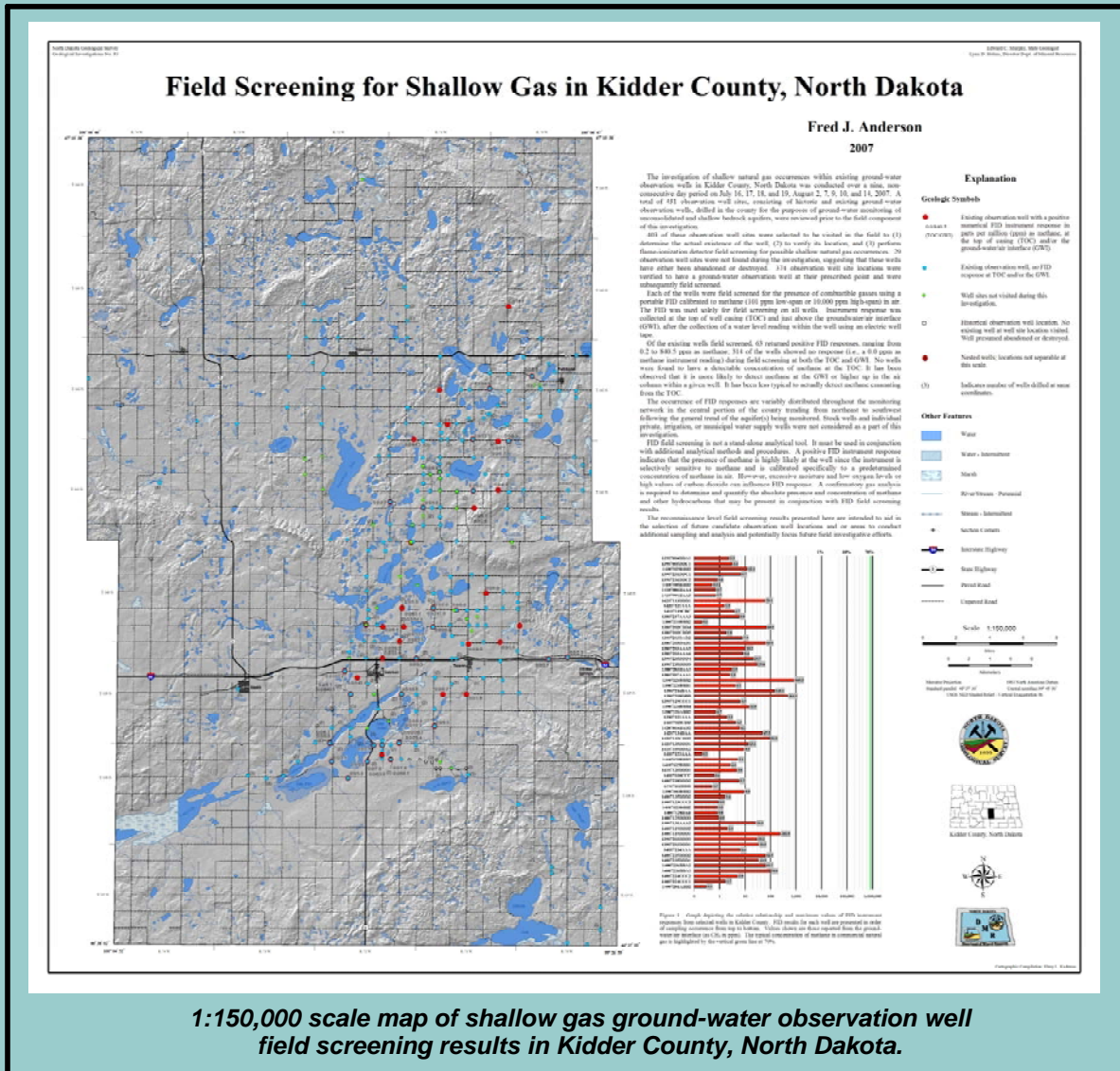
NORTH DAKOTA GEOLOGICAL SURVEY

Geological Information for the State of North Dakota

www.dmr.nd.gov/ndgs



SHALLOW GAS FIELD SCREENING IN KIDDER COUNTY, NORTH DAKOTA



1:150,000 scale map of shallow gas ground-water observation well field screening results in Kidder County, North Dakota.

NDGS GEOLOGICAL INVESTIGATIONS No. 53 (GI-53)

The North Dakota Geological Survey has recently completed an investigation into the occurrence of natural gas in shallow ground-water observation wells in Kidder County, North Dakota. Over 450 well sites were reviewed and visited during the investigation. Each existing observation well was field screened with a flame-ionization detector (FID) for the presence of methane. The locations of the existing observation wells in place within the county are depicted along with the associated FID instrument response.

Key Contact: Fred J. Anderson, Geologist
North Dakota Geological Survey
(701) 328-8013
fjanderson@nd.gov

Office Location: North Dakota Geological Survey
1016 East Calgary Ave.
Bismarck, ND 58503
(701) 328-8000